



MEASURING AND TESTING EQUIPMENT

DIMENSIONAL



VERNIER CALIPER



KW0600069 - KW0600071



KW0600072 - KW0600074

Features :

- Graduation 0.05 mm or 1 / 128"
- Laser engraved graduations with metric and inch scale
- Positive locking screw

Article No.	Model No.	Description	Dimension (mm)	Weight (kg)
KW0600069	QRC32	Vernier Caliper 150 mm / 6"	245 x 90 x 20	0.29
KW0600070	QRC33	Vernier Caliper 200 mm / 8"	310 x 105 x 20	0.36
KW0600071	QRC34	Vernier Caliper 300 mm / 12"	425 x 130 x 25	0.89
KW0600072	QRC2	Vernier Caliper 500 mm with Micro Adj.	720 x 190 x 40	1.87
KW0600073	QRC1	Vernier Caliper 1000 mm with Micro Adj.	1330 x 260 x 45	3.53
KW0600074	QRC3	Vernier Caliper 1500 mm with Micro Adj.	1880 x 410 x 50	5.54

DIAL CALIPER



Features :

- Graduation 0.02mm
- Positive locking screw.
- Dial rotates beneath the pointer

Article No.	Model No.	Description	Dimension (mm)	Weight (kg)
KW0600352	QRC7	Dial Caliper 150 mm	250 x 95 x 30	0.36
KW0600424	QRC4	Dial Caliper 200 mm	315 x 110 x 30	0.48
KW0600425	QRC5	Dial Caliper 300 mm	425 x 130 x 30	0.9

DIGITAL CALIPER



Features :

- Resolution 0.01mm
- Positive locking screw.
- Digital display

Article No.	Model No.	Description	Dimension (mm)	Weight (kg)
KW0600351	QRC12	Digital Caliper 150 mm / 6"	250 x 95 x 30	0.35
KW0600422	QRC11	Digital Caliper 200 mm / 8"	320 x 110 x 30	0.52
KW0600423	QRC10	Digital Caliper 300 mm / 12"	425 x 130 x 30	0.74

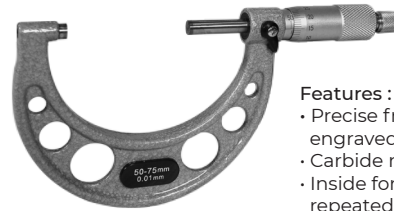
OUTSIDE MICROMETER



10175721



10175722



10175723 - 10175724

- Features :
- Precise frame and big styles engraved graduation
 - Carbide measuring faces
 - Inside force-limited device for repeated readings

Article No.	Model No.	Description	Graduation (mm)	Accuracy (mm)	Dimension (mm)	Weight (kg)
10175721	QRM8	Outside Micrometer 0 to 25 mm	0.01	+/- 0.004	130 x 50 x 18	0.19
10175722	QRM11	Outside Micrometer 25 to 50 mm	0.01	+/- 0.004	155 x 60 x 18	0.23
10175723	QRM13	Outside Micrometer 50 to 75 mm	0.01	+/- 0.005	180 x 70 x 18	0.25
10175724	QRM15	Outside Micrometer 75 to 100 mm	0.01	+/- 0.005	205 x 85 x 18	0.31

DIGITAL OUTSIDE MICROMETER



KW0600085

- Features :
- Function available: origin setting, inch/mm selection, zero setting, data hold, error alarm, data output
 - Two types of constant-force devices are available: ratchet stop and ratchet thimble
 - Inside force-limited device for repeated readings



10175725

Disc Type

Article No.	Model No.	Description	Graduation (mm)	Accuracy (mm)	Dimension (mm)	Weight (kg)
KW0600085	QRM1	Digital Outside Micrometer 0 ~ 25 mm	0.001	+/- 0.004	140 x 50 x 30	0.25
10175725	QRM2	Disc Outside Micrometer Digital 0 ~ 25 mm	0.001	+/- 0.004	130 x 50 x 20	0.21

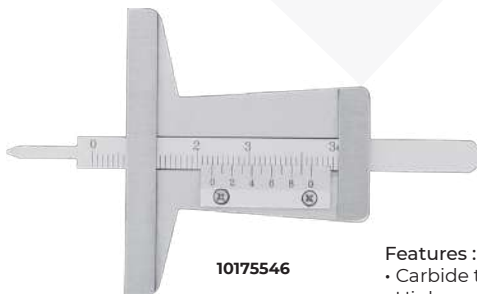
MICROMETER STAND



- Features :
- This product can be adjusted at any direction and position.
 - Made from cast iron
 - Use to hold micrometer

Article No.	Model No.	Description	Dimension (mm)	Weight (kg)
KW0600259	QRMT5	Micrometer Stand	180 x 125 x 125	1.2

DEPTH GAUGE



10175546

- Features :
- Carbide tipped measuring faces
 - High precision measurement of groove depth and step height



10175547

Article No.	Model No.	Description	Graduation (mm)	Accuracy (mm)	Dimension (mm)	Weight (kg)
10175546	QRG2	Depth Gauge Vernier Pocket 0 to 30 mm	0.1	+/- 0.01	100 x 50 x 15	0.02
10175547	QRG1	Depth Gauge Digital 0 to 25 mm	0.001	+/- 0.002	160 x 100 x 18	0.2

HEIGHT GAUGE



- Features :
- Carbide tipped scriber
 - Chrome-plated
 - Inclined handle improve slider ergonomic

KW0600091

HEIGHT GAUGE DIGITAL



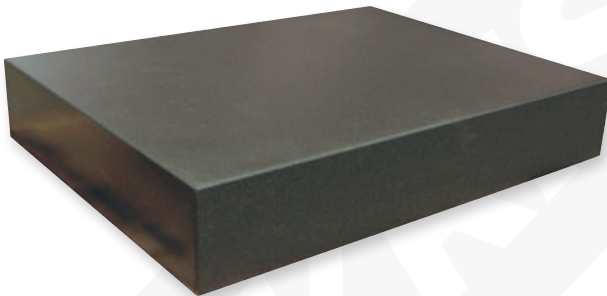
- Features :
- Carbide tipped scriber
 - Zero point setting at any position
 - Conversion mm/inch at any position

10175598

Article No.	Model No.	Description	Graduation (mm)	Dimension (mm)	Weight (kg)
KW0600091	QRG19	Height Gauge 0 to 300 mm	0.02	230 x 135 x 525	2.5
KW0600092	QRG20	Height Gauge 0 to 450 mm	0.02	560 x 350 x 840	3.8

Article No.	Model No.	Description	Graduation (mm)	Dimension (mm)	Weight (kg)
10175598	QRG21	Height Gauge Digital 0-300/0.01 mm	0.01	320 x 230 x 650	6.6
10175599	QRG22	Height Gauge Digital 0-600/0.01 mm	0.01	340 x 237 x 960	8.4

GRANITE PLATE



- Features :
- Granite is rust-proof
 - Non-magnetic
 - abrasive resistant

Article No.	Model No.	Description	Dimension (mm)	Weight (kg)	Flatness (um)
KW0600815	QRCT9	Granite Plate	450 x 300 x 100	42	2.1
KW0600816	QRCT10		600 x 450 x 100	85	2.4
KW0600817	QRCT11		750 x 500 x 130	150	2.7
KW0600818	QRCT6		1000 x 750 x 150	350	3.1
KW0600819	QRCT5		1000 x 1000 x 150	465	3.4
10008584	QRCT7		1500 x 1000 x 200	930	4

STAND FOR GRANITE PLATE



- Features :
- Suitable for granite plate
 - Solid Casting
 - 5 contact point for stability

Article No.	Model No.	Description	Dimension (mm)
KW0600822	QRCT1	Stand for Granite Plate	450 x 300 x 450
KW0600823	QRCT2		600 x 450 x 500
KW0600824	QRCT12		750 x 500 x 500
KW0600452	QRCT13		1000 x 750 x 450
KW0600821	QRCT14		1000 x 1000 x 500
10008556	QRCT15		1500 x 1000 x 500

DIAL INDICATOR COMMON



- Features :
- Total gear-driven system
 - High precision
 - Zero-setting at any position

Article No.	Model No.	Description	Range (mm)	Graduation (mm)	Dimension (mm)	Weight (kg)
KW0600082	QR110	Dial Indicator Common	0 - 10	0.01	165 x 80 x 60	0.13
KW0600177	QR125	Dial Indicator Ø58 mm	0 - 2	0.01	165 x 80 x 60	0.2
KW0600736	QR15	Dial Indicator	0 - 5	0.01	140 x 90 x 40	0.34
KW0600737	QR130	Dial Indicator	0 - 30	0.01	110 x 70 x 70	0.285
KW0600738	QR150	Dial Indicator	0 - 50	0.01	180 x 100 x 100	0.29
KW0600739	QR102	Dial Test Indicator	0.2	0.002	100 x 65 x 40	0.27
KW0600740	QR108	Dial Indicator	0.8	0.01	100 x 65 x 40	0.276
KW0600435	QR110L	Digital Indicator 0-10 mm with Lug Back	0 - 10	0.01	150 x 90 x 70	0.26

MAGNETIC STAND



- Features :
- This product can be adjusted at any direction and position.
 - Instant mounting and dismounting
 - Use magnetic force to prevent damage to indicators and probe

Article No.	KW0600256	KW0600258	KW0600427	KW0600428
Model No.	QRMT3	QRMT6	QRMT7	QRMT2
Description	Magnetic Stand Red 60kg	Mini Magnetic Stand Red 25kg	Mini Magnetic Stand Silver 25kg	Magnetic Stand Gold 60kg
Specification				
Work Magnetic Force (kg)	60		25	60
Main Body	Length (mm)	63	35	63
	Width (mm)	50	30	50
	Height (mm)	55	35	55
	Work Angle (°)	150	-	150
Main Stem	Length (mm)	270	165	270
Diameter of Hole	Slot (mm)	6.5	-	6.5
	Hole (mm)		8 + 0.02	

DIAL BORE GAUGE



10467302

10467505



Features :

- Bore gauge are used to measure internal hole dimensions and shape errors of different diameter and depth by comparative method

Article No.	10467302	10467502	10467503	10467504	10467505
Model No.	QRG3	QRG4	QRG5	QRG6	QRG7
Description	Dial Bore Gauge 18 - 35 mm	Dial Bore Gauge 35 - 50 mm	Dial Bore Gauge 50 - 160 mm	Dial Bore Gauge 160 - 250 mm	Dial Bore Gauge 250-450 mm
Specification					
Range (mm)	18 - 35	35 - 50	50 - 160	160 - 250	250 - 450
Graduation (mm)	0.01				
Depth (mm)	125	150		300	400
Interchangeable Anvil	7	4	11	5	
Washers	2	4	3	6	



GENERAL MEASURING



MULTIMETER ANALOG

SMALL SIZE
5 Functions



KW0600266

MEDIUM SIZE
6 Functions



KW0600300

LARGE SIZE
5 Functions



KW0600299

Features :

- 5 functions testing: DC voltage, AC voltage, DC current, resistance, and diode
- Fuse and diode protection
- Measuring range until 500VAC/VDC (KW0600266), 1000VAC/VDC (KW0600300 & KW0600299)
- Extra function: Transistor Check(KW0600300)

Article No.	KW0600266	KW0600300	KW0600299
Model No.	QRE1	QRE8	QRE7
Description	Multimeter Analog Small	Multimeter Analog Medium	Multimeter Analog Large
Specification			
DC Volts (V)	2.5, 10, 50, 250, 500	0.1, 0.5, 2.5, 10, 50, 250, 1000	
AC Volts (V)	10, 50, 250, 500	10, 50, 250, 1000	
DC Current (A)	500µ, 10µ, 250 m	5µ, 2.5m, 25m, 250 m, 2.5	5µ, 2.5µ, 25µ, 0.25
Resistance (Ω)	2K, 200K	2K, 20K, 200K, 2.000K, 20.000K	
Power Source (V)	1.5	1.5 x 2	
Dimension (H x W x D) (mm)	10 x 64 x 33	145 x 97 x 35	15 x 10 x 35
Weight (kg)	0.095	0.2	0.245

POCKET MULTIMETER DIGITAL



7 Functions



EN : 61326
EN : 61010-1
EN : 61010-02-03
EMC & LVD

Features:

- 4000 counts 7 functions including DCV, ACV, resistance, capacitance, frequency, continuity and diode test with data hold and relative functions.

Article No.	KW0600307	
Model No.	QRE9	
Description	Multimeter Digital Pocket 500V	
Specification		
Function	Max. Range	Accuracy (%rdg + digits)
DC Volts (V)	500	±(1.3% ± 3d)
AC Volts (V)	500	±(2.3% ± 5d)
Resistance (Ω)	40 m	±(10% ± 5d)
Continuity	Audible Threshold <60Ω	
Diode Test (mA)	Test Current 1	
Capacitance (µF)	200	±(10% ± 15d)
Frequency (Mhz)	10	±(2% ± 5d)
Dimension (H x W x D) (mm)	113 x 61 x 130	
Weight (kg)	0.09	

MULTIMETER DIGITAL COMPACT

Features:

- 2000 counts digital display with backlight
- Non Contact Voltage (NCV) AC
- Data Hold function

Article No.	10206570	
Model No.	QRE56	
Description	Multimeter Digital Compact 600V	
Specification		
DC Voltage (V)	200 m / 2000 m / 20 / 200 / 600	± (0.8% + 3d)
AC Voltage (V)	200 / 600	± (1.2% + 10d)
DC Current (A)	2000μ / 20 m / 200 m / 10 m	± (1% + 2d)
Resistance (Ω)	200 / 2000 / 20k / 200K / 2000K	± (0.8% + 2d)
Battery Test	9V and 1.5V	± (1% + 2d)
Continuity	Buzzer sound <30 ohm	
Diode Test	Test current 1mA, Open circuit voltage 2.8V	
Power Supply	9V battery	
Dimension (H x W x D) (mm)	150 x 70 x 48	
Weight	255 g	
Power Supply	2 x AAA 1.5V batteries	
Weight (kg)	0.145	

MULTIMETER DIGITAL AUTOMOTIVE

Features:

- 12 functions include DCV, ACV, DCA, ACA, resistance, RPM(Tach), dwell angle, duty cycle, frequency, temperature(°C/°F), continuity and diode test
- RPM measurement for automotive engines with 1 to 8 cylinders using the inductive pickup

Article No.	KW0600276	
Model No.	QRE2	
Description	Multimeter Digital Automotive	
Specification		
Function	Max. Range	Accuracy
DC Voltage (V)	326 m, 3.26, 32.6, 326, 1000	±(0.5% ± 2d)
AC Voltage (V)	3.26, 32.6, 326, 750	±(1.2% ± 4d)
DC Current (A)	326μ, 3260μ, 32.6 m, 326 m, 10	±(1.2% ± 3d)
AV Current (A)	326μ, 3260μ, 32.6 m, 326 m, 10	±(1.5% ± 5d)
Resistance (Ω)	326, 3.26K, 32.6K, 326K, 3.26 m, 32.6 m	±(2.0% ± 4d)
RPM (Tach) (rpm)	600~320; 6000~12000 (x10)	±(2.0% ± 4d)
Dwell Angle	3CYL to 0~120.0°; 4CYL to 0~90.0°; 5CYL to 0~72.0°; 6CYL to 0~60.0°; 8CYL to 0~45.0°	±(2.0% ± 4d)
Duty Cycle	1.0%~90.0%	±(2.0% ± 5d)
Frequency (Hz)	320, 3200, 32K	±(1.5% ± 4d)
Temperature (°C/°F)	-20~320 / -20~750 -4~320 / -4~1400	±(3.0% ± 2°C) ±(3.0% ± 3°F)
Diode Check	Test Current 0.6mA; Open Circuit Voltage 3.0V	
Continuity Check	Audible Threshold<20Ω	
Dimension (H x W x D) (mm)	189 x 91 x 315	
Weight (kg)	0.31	

LCR METER

CE

11000 COUNTS LCR METER

8 Function DMM



EMC & LVD
EN : 61010-1
EN : 61010-02-03
EN : 61326

Accessories :
Test leads and 9V battery

- Features:**
- Digital display counts : 11000
 - Data hold
 - Max/min recording mode

Article No.	KW0600489		
Model No.	QRE44		
Description	LCR Meter		
Specification			
Function	Range	Resolution	Accuracy
Resistance (Auto Ranging) (Ω)	110.00	0.01	± 1.2% of rdg ±5 dgt
	1.1000K 11.000K 110.00K	1 1 10	± 1.2% of rdg ±8 dgt
	1.1000 m 11.000 m 110.00 m	100 1K 10K	± 1.2% of rdg ±8 dgt
Capacitance (F)	11.000n	1p	± 5.0% of rdg ±30 dgt
	110.00n	1p	± 5.0% of rdg ±15 dgt
	1.1000n	0.1n	
	11.000n	1n	± 3.0% of rdg ±10 dgt
	110.00n	0.01μ	
	1.1000n	0.1μ	
Inductance (H)	11.000n	1μ	± 10% of rdg ±10 dgt
	110.00n	10μ	
	11 m	1μ	±(2%+5)
	110 m	10μ	
11	1 m		
110	10 m	±(5%+15)	
Dimensions (H x W x D) (mm)	150 x 70 x 48		
Weight (kg)	0.25		

CLAMP METER AC

CE

9 Functions



EN: 61010-1



Accessories:
Test leads, thermocouple
and carrying case

- Features:**
- 4000 counts digital display with backlight
 - 1.2" (30 mm) jaw opening
 - Non Contact Voltage (NCV) AC

Article No.	10207848	
Model No.	QRE51	
Description	Clamp Meter AC 400A	
Specification		
AC Current (A)	40 / 400	± (2.8% + 8d)
DC Voltage (V)	400 m / 4 / 40 / 400 / 600	± (1.5% + 2d)
AC Voltage (V)	400 m / 4 / 40 / 400 / 600	± (1% + 4d)
Resistance (Ω)	400 / 4k / 400k / 4 m / 40 m	± (1.5% + 2d)
Capacitance (F)	40n / 400n / 4μ / 40μ / 100μ	± (3% + 5d)
Frequency (Hz)	10 to 10k	± (1.5% + 2d)
Temperature	-20 to 760 °C / 4 to 1400 °F	± (3% ± 5°C/ 9°F)
Continuity	Buzzer sounds at <150Ω, Test current <0.5mA	
Diode Test	Test current 0.2mA, Open circuit 1.5VDC	
Temperature Sensor	Type K Thermocouple	
Power Supply	2 x AAA 1.5V batteries	
Dimensions (H x W x D) (mm)	67 x 37 x 200 / 157 x 8 x 279	
Weight (kg)	0.205	

CLAMP METER AC/DC

CE



10 Functions

True RMS



EN: 61010-1

Accessories:
Test leads, thermocouple and carrying case

Features:

- True RMS measurement fo ACV & ACA
- 6000 counts digital display with backlight
- Analog bargraph

Article No.	10207849	
Model No.	QRE57	
Description	Clamp Meter AC/DC 1000A TRUE RMS	
Specification		
AC Current (A)	600 / 1000	± (3% + 8d)
DC Current (A)	600 / 1000	± (3% + 5d)
AC Voltage (V)	600 m / 6 / 60 / 600	± (1.8% + 8d)
DC Voltage (V)	600 m / 6 / 60 / 600	± (1.5% + 2d)
Resistance (Ω)	600 / 6k / 60k / 600k / 6 m / 60 m	± (1.5% + 2d)
Capacitance (F)	40n / 400n / 4μ / 40μ / 400μ	± (3% + 5d)
Frequency (Hz)	10 to 10k	± (1.5% + 2d)
Temperature	-20 to 760 °C / 4 to 1400 °F	± (3% ± 5°C/ 9°F)
Continuity	Buzzer sounds at <40Ω, Test current <0.5mA	
Diode Test	Test current 0.3mA, Open circuit 1.5VDC	
Temperature Sensor	Type K Thermocouple	
Power Supply	2 x AAA 1.5V batteries	
Dimensions (H x W x D) (mm)	77 x 4 x 232 / 175 x 75 x 30	
Weight (kg)	0.271	

CLAMP METER FLEXIBLE JAW



EN: 61010-1
EN: 61010-02-031
EN: 61326

Features:

- True RMS measurement
- 3000 Count Backlit Display
- 254mm (10") Head Cable Length

Article No.	10133314
Model No.	QRE33
Description	Clamp Meter Flexible Jaw 3000A
Specification	
AC Current (A)	30.00 / 300.0 / 3000
Measuring accuracy	±(3.0%+5)
Power Supply	2x1.5V AAA battery
Dimension (H x W x D) (mm)	260 x 120 x 30
Packing Dimension (mm)	350 x 150 x 60
Weight (kg)	0.150

VOLTAGE DETECTOR NONCONTACT

CE



EMC & LVD
EN : 61010-1
EN : 61010-2-031
EN : 61326

Features:

- Non conductive measurement for safety
- Compact design
- Double molded case



Red light when detecting



Illumination fucntion



Green light when idle

Article No.	10106735
Model No.	QRE55
Description	Voltage Detector Noncontact
Specifications	
Voltage Detecting Range (VAC)	50 to 1000
Frequency Range (Hz)	50 / 60
Voltage Sensitivity	Single
LED Indicator	Red & Green
Safety Category	CAT III 1000V
Power Supply	2x1.5V AAA battery
Dimension (H x W x D) (mm)	135 x 190 x 220
Weight (kg)	0.50

INSULATION RESISTANCE METER



6 Functions



EMC & LVD
IEC 1010
EN: 61010-1
EN: 61010-2-031



Accessories:
Test leads, thermocouple and carrying case

Features:

- 6000 counts digital display with backlight
- Analog bargraph
- Polarization Index (PI) measurement

Article No.	10206571			
Model No.	QREM42			
Description	Insulation Resistance Meter 5000V			
Specification				
Insulation Resistance Measurement				
Output Voltage	500 V	1000 V	2500 V	5000 V
Measuring Range (Ω)	0.005 m to 6.00 G	0.005 m to 6.00 G	0.05 m to 60.0 G	0.05 m to 60.0 G
Open Circuit	Output Voltage ± 20%			
Rated Current	1 to 1.2 mA @ 0.5 MΩ load	1 to 1.2 mA @ 1 MΩ load	1 to 1.2 mA @ 2.5 MΩ load	1 to 1.2 mA @ 5 MΩ load
Short Circuit	Approx. 1 mA			
Accuracy	± (2.5% to 4% reading + 15 digits)			
AC/DC Voltage Measurement, Low Resistance Measurement & Continuity Check				
Function	Range	Resolution	Accuracy	
DC Voltage (V)	0.5 to 600	0.1	± (1% reading + 5 digits)	
AC Voltage (V)	0.5 to 600	0.1	± (2.5% reading + 10 digits)	
Resistance (Ω)	0.0 to 600.0	0.1	± (1.5% reading + 10 digits)	
	601 to 6.000 k	0.001 k	± (1.5% reading + 15 digits)	
Continuity Buzzer	≤ 50 Ω			
Short Circuit (mA)	Current ≥ 200			
Open Circuit Test	Voltage ≥ 4.5 V			

DIGITAL EARTH TESTER



5 Functions



EN: 61010-1



Accessories:
Test leads, 4 wire cable, 2 iron rods and carrying case

Features:

- Automatic zero adjustment
- Test Hold function
- Over range and Low battery indicator

Article No.	10206572	
Model No.	QREM43	
Description	Digital Earth Tester 2000 OHM	
Specification		
Earth Resistance (Ω)	20 / 200 / 2000	± (2% + 3d)
Earth Voltage (V)	200	± (3% + 3d)
Resistance (Ω)	200k	± (1% + 2d)
DC Voltage (V)	1000	± (0.8% + 3d)
AC Voltage (V)	750	± (1.2% + 10d)
Measurement rate	2.5 readings per second	
Power Supply	6 x AA 1.5V batteries	
Dimension (H x W x D) (mm)	200 x 92 x 50	
Weight (kg)	0.7	



MOTOR AND PHASE ROTATION INDICATOR

CE



EMC & LVD
EN : 61010-1
EN : 61010-2-031
EN : 61326

Accessories:
Test leads, gift box with carrying case, 9V battery and temperature probe

Features:

- Determine rotary field direction
- Non-contact rotary field indication
- Determine the motor connection

Article No.	KW0600492
Model No.	QRE10
Description	Motor And Phase Rotation Indicator
Specification	
Nominal Voltage Rotary Direction (VAC)	1 to 400
Nominal Voltage Phase Indirection (VAC)	120 to 400
Frequency Range (Hz)	2 to 400
Test Current (per phase) (mA)	<3.5
Electrical Safety	DIN, VDE 0411, IEC61010 DIN;IEC61557-7/ENG61557-7
Operating Altitude (m)	2000
Operating Temperature (°C)	0 to + 40
Dimensions (H x W x D) (mm)	180 x 120 x 30
Weight (kg)	0.25

LAN TESTER 2 IN 1

CE



6 Functions



EMC & LVD
EN : 61326
EN : 61010-1
EN : 61010-02-031

Accessories :
• 9V battery and Two"AAA" batteries, remoteterminator, holster, cables, test leads

Features :

- Test the correct pin configuration of 10 base-T 10 base-2 thin ethernet cable, RJ45/RJ11 modular cables 356A, TIA-568A/568B and token ring cable etc.
- With remote kit it can remotely test cables up to 300m away either on the wall plate or patch panel
- Test the ground wire

Article No.	KW0600494	
Model No.	QRE11	
Description	2 in 1 Lan Tester	
Specification		
Function	Max. Range	Accuracy
Voltage (DC) (V)	600	±0.5%
Voltage (AC) (V)	600	±1.2%
Current (DC) (mA)	200	±1.5%
Current (AC) (mA)	200	±2.0%
Resistance (MΩ)	20	±0.8%
Continuity Test	Beep If Less Than 100 Ω	
Dimension (H x W x D) (mm)	60 x 80 x 40	
Weight (kg)	0.28	

3 IN 1 STUD METAL VOLTAGE FINDER

CE



Stud Scan
0-1.5" (38mm)



Metal Scan
0-1.5" (38mm)



AC Scan
0-2" (50mm)

EMC
EN: 61326

Features:

- 3 in 1 wall detector function: Metal, Wood and AC wire
- Locate edges of studs, joints or live AC wires in building materials
- Red LED indicator with audible tone

Article No.	10207851	
Model No.	QRE53	
Description	3 in 1 Stud Metal AC Voltage Finder	
Specification		
Range Detections	1/2, 1 and 1/2"	
Wood or Metal Stud	0 to 1½" (38 mm) through drywall	
Live AC Wire	0 to 2" (50 mm) through drywall	
Wood	± 3 mm (1/8")	
Metal	± 6 mm (1/4")	
Power Supply	9V battery	
Operating Temperature	0 to 50 °C / 32 to 122 °F	
Storage Temperature	-10 to 60 °C / 14 to 140 °F	
Dimension (H x W x D) (mm)	145 x 60 x 28	
Weight (kg)	0.15	

THERMOMETER DIGITAL



Accessories:
 · Includes two 1.5V button batteries

Features:

- Wider measurements range from -20°C to 1000°C or - 4°F to 1832°F
- Accurately display temperature (°C / °F) value with basic accuracy 3%
- °C / °F switchable

Article No.	KW0600277	
Model No.	QREM3	
Description	Thermometer Digital -20~1000C	
Specification		
Temperature Range	Resolution	Accuracy
-20°C ~ + 1000°C -4°F ~ + 1832°F	1°C 1°F	±3% of rdg ± 3dgt
Sensor: Type K Thermocouple		
Dimension (L x W x H) (mm)	188 x 645 x 245	
Weight (kg)	0.16	

THERMOMETER PEN



Accessories:
 · Battery LR44 1.5V 1pcs
 · Clamshell

Features:

- Easy to use: remove the protective heat, press the ON/OFF button and insert into the testing area
- LCD screen shows readings in Fahrenheit or Celcius
- Max/min hold & data hold

Article No.	KW0600308	
Model No.	QREM53	
Description	Thermometer Pen -40~250C	
Specification		
Function	Range	Basic Accuracy
Temperature (°C /°F)	-40~250 / -40~482	±1.5%
Dimension (H x W x D) (mm)	211 x 32 x 190	
Weight (kg)	0.07	

THERMOMETER FOODGRADE



Food Grade

HACCP approved



EMC & LVD
 EN : 61010-1
 EN : 61010-02-031
 EN : 61326



Features:

- HACCP (Hazard Analysis and Critical Control Points) approved
- CE safety conformance
- IP65 waterproof

Article No.	10106736	
Model No.	QREM30	
Description	Thermometer Foodgrade -40~280C	
Specification		
IR Measuring Range	-40 to 280°C / -40 to 536°F	
Probe Measuring Range	-40 to 200°C / -40 to 392°F	
IR Accuracy	-40 to 20°C / -40 to 68°F: ± 3°C / 5.4°F	
	20 to 280°C / 68 to 536°F: ±1% or ±1°C / 1.8°F	
Probe Accuracy	0 to 200°C: ±1% or ±1°C / 1.8°F	
	≤ 0°C: ± 2°C	
Resolution	0.1	
Repeatability	< 1°C	
Response Time	< 500 ms	
Emissivity	0.95 Fixed	
Optical Resolution	Distance to Spot Size ratio = 4:1	
Power Supply	2x1.5V AAA battery	
Dimension (H x W x D) (mm)	140 x 350 x 20	
Weight (kg)	0.123	

THERMOMETER 1 & 2 PROBE



SINGLE INPUT

KW0600278

Features:

- Automatic selection range
- °C/°F switchable and auto power off
- User selectable 0.1°C or 1°C (0.1°F for 1°F) Resolution



DUAL INPUT

KW0600283

Article No.	KW0600278	KW0600283
Model No.	QREM4	QREM6
Description	Thermometer 1 Probe -50~1300C	Thermometer 2 Probe -50~1300C
Specification		
Sensor	Type K Thermocouple	
Range	-50°C ~ 1300°C / -58°F ~ 2000°F	
Resolution	1°C / 1°F	
Accuracy	± 0.5% + 1°C / ±0.5% + 2°F	±3% + 3dgt
Dimension (H x W x D) (mm)	165 x 76 x 43	
Weight (kg)	0.4	0.4

TEMP PROBE SOLID

TEMP PROBE SOLID & LIQUID

TEMP PROBE 1M SOLID & LIQUID



KW0600295



KW0600296



KW0600297



KW0600298



KW0600301

Article No.	Model No.	Description
KW0600295	-	Temp Probe Solid -50~450C
KW0600296	-	Temp Probe Solid -50~450C Longarm
KW0600297	-	Temp Probe Solid & Liquid 0~250c
KW0600298	-	Temp Probe Solid & Liquid 0~800c
KW0600301	-	Temp Probe 1m Solid & Liquid -50-500C

THERMOMETER INFRARED POCKET



Accessories:
Battery AAA 1.5V 2pcs

Features:

- Non-contact infrared thermometer with laser pointer measures to -50°C ~270°C or -58°F ~ 518°F
- Pocket size and easy to use with measure temperature of hot or moving objects from a safe distance
- Fixed emissivity (0.95) covers 90% of surface applications

Article No.	KW0600279	
Model No.	QREM5	
Description	Thermometer Infrared Pocket -50~270C	
Specification		
Measuring Range	-50°C ~ 270°C -58°F ~ 518°F	Resolution: 1°C Resolution: 1°F
Basic Accuracy	±2%, ±2°C or ±2°	
Dimensions (H x W x D) (mm)	935 x 5 x 235	
Weight (kg)	0.06	

THERMOMETER INFRARED

CE



-50 to 380°C

EMC
EN: 61326
EN: 60825-1

- Features:**
- Mini modern housing design
 - Single laser pointer
 - Fast sampling time

Accessories:
Carrying Case

Article No.	10206574
Model No.	QREM45
Description	Thermometer Infrared -50~380C
Specification	
Measuring Range	-50 to 380°C (-68 to 752°F)
Resolution	0.1
Repeatability	± 1°C (1.8°F)
Display	3-1/2 digit (1999 count) LCD with backlighting
Response time	< 150 ms
Emissivity	Fixed at 0.95
Field of view	D/S = Approx. 12:1 ratio (D = distance, S = spot)
Diode laser	Output <1mW, Wavelength 630 to 670nm, class 2 (II) Laser product
Spectral response	8 to 14 um
Power off	Automatic shut off after 10 minutes, approx.
Power supply	9V battery
Dimensions (H x W x D) (mm)	113 x 96 x 35
Weight (kg)	0.13

CE



-50 to 400°C



- Features:**
- Temperature, Humidity and Dew Point measurement
 - Green, yellow and red light LED indicator for Dew Point
 - Dual laser pointer

Article No.	10206573
Model No.	QREM44
Description	Thermometer Infrared -50~400C with Dewpoint
Specification	
Temperature Range	-50 to 400°C (-58 to 752°F) ± 1% / ± 1°C
Humidity Range	0 to 100% RH ± 3.5°C @ 20 to 80% RH
Dew Point Range	-30 to 100°C (-22 to 212°F) ± 2% of reading
Resolution	0.1
Display	3-1/2 digit (1999 count) LCD with backlighting
Response time	< 150 ms
Emissivity	Fixed at 0.95
Field of view	D/S = Approx. 12:1 ratio (D = distance, S = spot)
Diode laser	Output <1mW, Wavelength 630 to 670nm, class 2 (II) Laser product
Spectral response	8 to 14 um
Power off	Automatic shut off after 15 minutes, approx.
Power supply	9V battery
Dimensions (H x W x D) (mm)	168 x 86 x 58
Weight (kg)	0.163

CE

-50 to 550°C



EN : 61326-1
EN : 60825-1

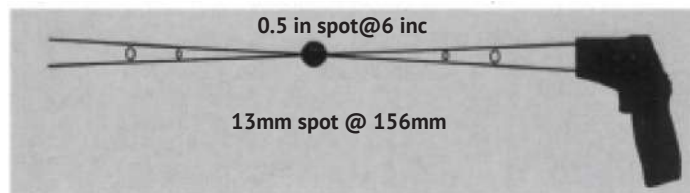
Dual Laser pointer

- 150ms faster sampling time
- 1% accuracy

- Features:**
- User selectable °C or °F
 - Dual laser targeting
 - Automatic data hold

Distance (D) to Spot size (S)

D:S=12:1



(Unit: mm)

Article No.	KW0600559
Model No.	QREM15
Description	Thermometer Infrared -50~550C
Specification	
IR Temp. Range (°C/°F)	-50 to 550 / -58 to 1022
Emissivity	Adjustable 0.10~1.0
Optical Resolution	12:1 Distance to Spot Size
Power Supply	9V Battery
Dimension (H x W x D) (mm)	146 x 104 x 43
Weight (kg)	0.16

THERMOMETER INFRARED



-50 to 800°C



EMC
EN: 61326
EN: 60825-1

- Features:**
- Dual laser pointer
 - Fast sampling time
 - LCD display with backlight

Accessories:
Box Carrying Case

Article No.	10206575	
Model No.	QREM46	
Description	Thermometer Infrared -50~800C	
Specification		
Measuring Range	-50 to 800°C (68 to 752°F)	± 1% / ± 1.0°C (1.8°F)
Resolution	0.1	
Repeatability	± 1°C (1.8°F)	
Display	3 - 1/2 digit (1999 count) LCD with backlighting	
Response time	< 150 ms	
Emissivity	Adjustable from 0.10 to 1.0	
Field of view	D/S = Approx. 20:1 ratio (D = distance, S = spot)	
Diode laser	Output <1mW, Wavelength 630 to 670nm, class 2 (II) Laser product	
Spectral response	8 to 14 um	
Power off	Automatic shut off after 7 minutes, approx.	
Power supply	9V battery	
Dimensions (H x W x D) (mm)	146 x 104 x 43	
Weight (kg)	0.16	

INFRARED THERMAL IMAGING



- Features:**
- Smart portable design and light weight
 - Fast temperature measurement with 50Hz frame rate
 - Auto focus mode camera

Article No.	10206576	
Model No.	QREM47	
Description	Infrared Thermal Imaging Compact -20~380C	
Specification		
Measuring Range	-20 to 380°C / -4 to 416°F	
Accuracy	+/- 2 C (+/- 3.6F) or +/- 2% of reading	
Display	2" TLT LCD, 240 x 320 pixels resolution	
Field of View	31 x 31 degree, focus distance 0.5m	
IR Resolution	80 x 80 pixels	
Emissivity	Adjustable 0.01 to 1	
Color Palettes	Iron, Rainbow, Grey, Grey inverted	
Spot Marks	Center Spot, Auto Hot and Cold Mark	
Image Storage	Bitmap (BPM), Including 6400 points measurement data	
Battery	Li-ion rechargeable battery, 8 hours working time	
Dimensions (H x W x D) (mm)	70 x 58 x 175	
Weight (kg)	0.45	

TEMPERATURE AND HUMIDITY METER



- Features:**
- Measurable Humidity, DBT, WBT and Dew Point Temperature
 - Bluetooth interface to Krisbow Meter Mobile App
 - Max Hold and Data Hold Function

Article No.	10176565	
Model No.	Qrem44	
Description	Temperature and Humidity Meter	
Specification		
Function	Range	Accuracy
Dry Bulb Temperature	-20 to 60°C -4 to 140°F	± 0.5°C / 0.9°F (@ 0 to 40°C) ± 1°C / 1.8°F (@ others)
Wet Bulb Temperature	0 to 60°C 32 to 140°F	± 0.5°C / 0.9°F (@ 0 to 40°C) ± 1°C / 1.8°F (@ others)
Dew Point Temperature	-20 to 60°C -4 to 140°F	± 0.5°C / 0.9°F (@ 0 to 40°C) ± 1°C / 1.8°F (@ others)
Humidity	0 to 100% RH	± 3.5% RH (@ 20 to 80% RH) ± 5% RH (@ others)
Resolution	0.1 (all measurement)	
Power	9V battery	
Dimension (H x W x D) (mm)	195 x 55 x 38	
Weight (kg)	0.14	

THERMO HYGRO



10207853



Features:

- Have clear and easy-to read LCD screen
- C/F unit temperature
- Low battery indication

Article No.	10207852	10207853
Model No.	QREM54	QREM55
Description	Thermo Hygro 0~50c/10~90rh	Thermo Hygro Dual 0~50c/10~90rh
Specification		
Air Temperature Range	-10 to 60°C / 14 to 140°F	
Air Temperature Accuracy	± 1°C / ± 1.8°F	
Humidity Range	0 to 99% RH	
Humidity Accuracy	± 4% RH	
Display	82 x 68 mm LCD display	
Resolution	0.1	
Power Supply	2 x 1.5 V AAA batteries	
Dimension (Unit/Pack) (H x W x D) (mm)	105 x 100 x 25	228 x 137 x 45
Weight (kg)	0.145	0.160

TEMPERATURE AND HUMIDITY DATA LOGGER



With casing



Features:

- Memory for 32700 values
- LCD to show some logging information easily
- LCD to show time and date

Article No.	10028922
Model No.	QREM68
Description	Temperature & Humidity Datalogger
Specifications	
Measuring Range	-40 to 70°C, 0 to 100% RH
Accuracy	±1°C, ±3% RH
Resolution	0.1°C, 0.1% RH
Memory	32700
Measuring Rate	1sec to 24h
Analysis Software	Windows 2000, XP, Vista
Dimension (H x W x D) (mm)	94 x 48 x 33
Weight (kg)	0.115

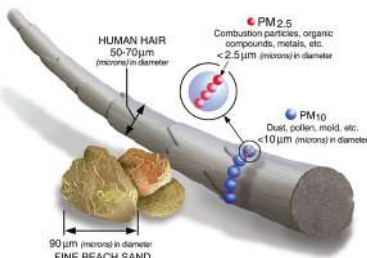
PARTICLE COUNTER



EMC
EN: 61326

Features:

- Analog bar indication
- 2 inch TFT 220 x 176 pixels LCD display
- LCD display with color & backlight



Article No.	10206577
Model No.	QREM48
Description	Particle Counter 2.5um And 10um
Specifications	
Particle Counter	
Channel (µm)	2.5, 10
Mass Concentration (µg/m3)	PM 2.5: 0 to 2000 PM 10: 0 to 2000
Resolution (µg/m3)	1
Air Temperature	
Range (°C/°F)	0 to 50 / 32 to 122
Resolution (°C/°F)	0.1
Accuracy (°C/°F)	± 1 / 2
Humidity	
Range (%RH)	0 to 100
Resolution(%RH)	0.1
Accuracy(%RH)	± 3.5 @ 20 to 80
Display	2 inch TFT Color LCD display, 220x176 pixels
Auto Power Off	Adjustable 3, 10 or 30 mins inactivity
Power	9V battery
Dimension (Unit/Pack) (H x W x D) (mm)	55 x 38 x 185 / 85 x 45 x 220
Weight (kg)	0.14

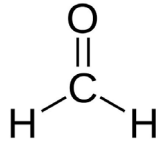
AIR QUALITY METER COMPACT TYPE

CE



1 YEAR GUARANTEE

EMC EN: 61326



CAUTION: CONTAINS FORMALDEHYDE.
Toxic by inhalation and if swallowed. Irritating to the eyes, respiratory systems and skin. May cause sensitization by inhalation or skin contact. Risk of serious damage to eyes. Potential cancer hazard. Repeated or prolonged exposure increases the risk.

Features:

- 2.4 inches TFT colorful LCD display, 240 x 320 pixel
- Detecting PM2.5, HCHO, temperature and humidity
- High capacity rechargeable lithium battery

Article No.	10207854
Model No.	QREM56
Description	Air Quality Meter Compact Type
Specification	
Particle Counter	
Channel Size (µm)	2.5
Mass Concentration Range (µg/m3)	0 to 2000
Resolution (µg/m3)	1
HCHO Measurement	
Mass Concentration Range (µg/m3)	0 to 5.00
Resolution (µg/m3)	1
Accuracy	± 5% F.S
Air Temperature & Humidity	
Range	-20 to 70°C / 0 to 100% RH
Resolution	0.1°C / 0.1% RH
Accuracy	± 2°C / ± 3.5% RH @ 20 to 80% RH
Display	2 inch TFT Color LCD display, 220 x 176 pixels
Auto Power Off	Adjustable 3, 10 or 30 mins inactivity
Power	9V battery
Dimension (Unit/Pack) (H x W x D) (mm)	85 x 73 x 165 / 95 x 83 x 175
Weight (kg)	0.36

MOISTURE METER PINLESS

CE



1 YEAR GUARANTEE

EMC EN: 61326

Material	Moisture Range (%)	Moisture Status
Concrete	0 - 25	Dry
	25 - 50	Wet
Wood	0 - 15	Dry
	15 - 30	Wet

Features:

- Quickly indicate the moisture content of materials
- Adjustable Dry and Wet alarm function
- Automatic data hold

Article No.	10207855
Model No.	QREM57
Description	Moisture Meter Pinless 0~100rh
Specification	
Measuring Range (%RH)	0 to 100
Accuracy	+/-5% (+/-5 digit)
Penetration Depth (mm)	20 to 40
Resolution (% RH)	1
Display	2 inch LCD display, 220 x 176 pixels
Auto Power Off	Auto off after approx.10 minutes of inactivity
Operating Conditions	0 to 50 deg C (32 to 122 deg F) < 80% RH non-condensing
Power	9V battery
Dimension (Unit/Pack) (H x W x D) (mm)	55 x 38 x 185 / 85 x 45 x 22
Weight (kg)	0.14

PORTABLE WOOD MOISTURE METER



1 YEAR GUARANTEE

Features:

- Dual backlit LCD digital display of moisture and temperature
- Readings with integral electrode pins
- User selectable wood moisture, building material moisture, °C, °F

Article No.	10037769
Description	Portable Wood Moisture Meter
Specifications	
Electrode Length (mm)	8
Measuring Range	Wood : 6 – 44%
	Building Material : 0.2 – 2.0%
	Ambient Temperature: 0 to 50°C (32 to 122°F)
	Ambient Relative Humidity 0 – 85% RH
Accuracy	Wood : ±2%
	Material : ±0.2%
Auto Power OFF	Ambient Temperature ±1°C / ±1.8°C
Auto Power OFF	After Approx. 3 mins
Dimension (HxWxD) (mm)	960 x 40 x 20
Weight (kg)	0.083

ENVIRONMENT METER



Features:

- 5 in 1 environment meter for temperature, humidity, sound, light and air flow
- USB Interface to PC
- Easy to use, fast and accurate measurement

Article No.	10176832	
Model No.	QPEM39	
Description	Environment Meter 5 in 1 Pro	
Function	Measuring Range	Accuracy
Temperature	-200 to 1372°C (thermocouple)	± (1.5% rdg + 2°C)
	-30 to 100°C (air temperature)	± 1°C
Humidity (%RH)	5 to 98	± 3.5
Sound Level	30 to 130 dB	± 3.5 dB
Light	20, 200, 2000, 20.000 Lux	± (5% + 10 digit)
	0.40 to 30.00 m/s	± (3% + 0.20 m/s)
Anemometer	196 to 5900 ft/min	± (3% + 40 ft/m)
	3.6 to 108.0 km/h	± (3% + 0.8 km/h)
	2.2 to 57.0 MPH	± (3% + 0.4 mph)
	1.9 to 58.0 Knots	± (3% + 0.4knots)
	0 to 999,900 CMF or CMM	Depend on condition
Power	9V battery	
Dimension (H x W x D) (mm)	248 x 65 x 45	
Weight (kg)	0.365	

SOUND LEVEL METER



Features:

- Bluetooth interface to Krisbow meter mobile app
- Max Hold and Data Hold Function
- Auto Power Off

Article No.	10176592
Model No.	QREM36
Description	Sound Level Meter
Specification	
Frequency range	31.5Hz to 8KHz
Measuring level range	35 to 130 dB (auto mode)
Accuracy	± 3 dB (under reference conditions 94dB, 1KHz)
Mode Level ranges	Lo: 35-80 dB; Med: 50-100 dB; Hi: 80-130dB
Resolution	0.1dB
Frequency weighting	A and C
Microphone	1/2" condenser
Display	LCD (4 digits)
Display Update	0.5 sec.
Power supply	9V battery
Dimensions (H x W x D) (mm)	185 x 55 x 38
Weight (kg)	0.153

LIGHT METER



Features:

- Bluetooth interface to Krisbow meter mobile app
- Max Hold and Data Hold Function
- Auto Power Off

Article No.	10176593
Model No.	QREM37
Description	Light Meter 40.000lux
Specification	
Measuring Range	400.0, 4000, 40.00K Lux / 400.0, 4000 Fc Note: 1Fc = 10.76 Lux
Resolution	0.1 Lux or 0.01 Fc
Accuracy	± 5% ± 10d (<10,000 Lux) ± 10% ± 10d (>10,000 Lux)
Over Range Indication	"OL" icon
Measuring Rate	2 times / second
Repeatability	± 3%
Display	3 ¾ digit LCD w/ high speed 50 segment bar graph
Power supply	9V battery
Unit Dimension (H x W x D) (mm)	206 x 55 x 38
Weight (kg)	0.14

LIGHT METER DATALOGGER

CE



Features:

- C.I.E standard illuminate A (2856K)
- Datalogger function (99 readings)
- USB Interface to PC

Article No.	10176594
Model No.	QPEM38
Description	Light Meter Datalogger 400.000lux
Specification	
Measuring Range	400, 4K, 40K, 400K Lux / 40, 400, 4K, 40K Fc
Resolution	0.1 Lux or 0.01 Fc
Accuracy	± 3% ± 0.5fs. (<10,000 Lux) / ± 4% ± 10d (>10,000 Lux)
Over Range Indication	"OL" icon
Measuring Rate	1.3 times / second
Repeatability	+/- 3%
Power supply	9V battery
Cable Length of Light Sensor (cm)	107
Light Sensor Dimension (mm)	115 x 60 x 35
Unit Dimension (H x W x D) (mm)	185 x 65 x 45
Weight (kg)	0.248

LIGHT METER LED

CE



LED



EMC
EN61326-1 2006
IEC61000-4-2 2006
IEC61000-4-3 2007
JIS C1609: 1993
CNS 5519 class A

Features:

- 4000 counts digital display with backlight
- Selectable source for LED Light
- LED Light function measure white light LED, fluorescent, meter halide, tungsten and incandescent sources.

Article No.	10206578
Model No.	QREM49
Description	Light Meter Led 400.000lux
Specification	
Measuring Range	400, 4K, 40K, 400K Lux / 40, 400, 4K, 40K Fc Note: 1Fc = 10.76 Lux; 1K = 1000
Resolution	0.1 Lux or 0.01 Fc
Accuracy	± 3% for LED / ± 6% for other visible light
Source Selecting	Standard light / LED light
Angle Deviation from Cosine Characteristic	30° ± 2%
	60° ± 6%
	80° ± 25%
Measuring Rate	2.5 times / second
Power supply	9V battery
Operating Conditions	5 to 40 °C; 0 to 70% RH
Cable Length of Light Sensor (cm)	107
Light Sensor Dimension (mm)	115 x 60 x 35
Dimension (Unit/Pack) (H x W x D) (mm)	185 x 65 x 45 / 278 x 76 x 50
Weight (kg)	0.248

Accessories:
Photo detector & carrying case



ANEMOMETER DIGITAL



Features:

- Bluetooth interface to Krisbow meter mobile app
- Max Hold and Data Hold Function
- Auto Power Off

Article No.	10176567		
Model No.	QREM35		
Description	Anemometer Digital 0.4~20 M/S		
Specification			
Air Velocity	Range	Resolution	Accuracy
m/s	1.10 to 15.00	0.01	± (3% + 0.30m/s)
Km/h	4.0 to 90.0	0.1	± (3% + 1.0km/h)
Ft/min	220 to 4920	1	± (3% + 0.20ft/m)
MPH	2.5 to 56.0	0.1	± (3% + 0.4mph)
Knots	2.2 to 48.0	0.1	± (3% + 0.4knots)
Air Temperature	-10 to 60 deg C 14 to 140 deg F	0.1	± 2 deg C ± 4 deg F
Display	LCD 4 digits, dual line		
Power supply	9V battery		
Dimensions (H x W x D) (mm)	185 x 55 x 38		
Weight (kg)	0.153		

ANEMOMETER HOT WIRE



Features:

- Thermal anemometer, available for very low air velocity measurement.
- Slim probe, ideal for grilles & diffusers.
- Combination of hot wire and standard thermistor, deliver rapid and precise measurements.

Article No.	KW0600653		
Model No.	QREM12		
Description	Anemometer Hot Wire 0.1~25m/S		
Specification			
Air Velocity	Range	Resolution	Accuracy
m/s (meter per second)	0.1~25.0	0.01	± 5% ±0.1
km/h (kilometer per hour)	0.3~90.0	0.1	± 5% ±0.1
ft/min (feet per minute)	20~4925	-	± 5% ±1
MPH (miles per hour)	0.2~55.8	-	± 5% ±0.1
Knots (nautical miles per hour)	0.2~48.5	0.1	± 5% ±0.1
Air Temperature (°C/°F)	0°C to 50°C (32°F to 122°F)	0.1°C / 0.1°F	1°C / 1.8°F
Dimension (HxWxD) (mm)	198 x 78 x 51		
Weight (kg)	0.32		

TACHOMETER DIGITAL



Features:

- Wide measurement range and high resolution
- 40 readings memories
- Built-in laser pointer

Accessories:

- Adaptor for connection probe
- Probe 3pcs
- Box Carrying Case

Article No.	KW0600563
Model No.	QRT17
Description	Tachometer Digital
Specification	
Contact Test Range (rpm)	2 to 20,000
Non-Contact Test Range (rpm)	2 to 99,999
Tot Test Range (rpm)	1 to 99,999
Accuracy	±(0.05% + 1 digit)
Resolution (rpm)	0.1 (2 to 9999.9), 1 (over 10000)
Sampling Time	0.5 sec. (over 120 rpm)
Detecting Distance (mm)	50 to 500
Time Base	Quartz Crystal
Power Consumption (mA)	Approx. 45
Battery (V)	9
Dimension (H x W x D) (mm)	160 x 60 x 42
Weight (kg)	0.16

LASER DISTANCE METER



CE

Features:

- Continuous Measurement
- Minimal distance tracking
- Water & Dust Proof IP54

Article No.	10138998
Model No.	QRDM20
Description	Laser Distance Meter 20m
Specification	
Measuring Range (m)	0.05 to 20
Measuring accuracy (mm)	±1.5
Resolution (mm)	1
Laser Class	Class II (635 nm, <1mW)
Auto Power Off / Laser Off	After 3 min / After 30 sec
Operating / Storage Temperature (°C)	-10 to 50 / -20 to 70
IP Protection	IP54
Power Supply	2x1.5V AAA battery
Dimension Unit/Packing (H x W x D) (mm)	100 x 36 x 23 / 210 x 140 x 40
Weight (kg)	0.064



CE



1 YEAR GUARANTEE

EMC
EN : 60825-1
EN : 61326

Accessories:

- Soft Bag.
- Holding Rope.

Features:

- IP54 Dust Protect/Splash proof
- Area, Volume Calculations
- Indirect measurement using Pythagoras

Article No.	10106768
Model No.	QRDM100
Description	Laser Distance Meter 100m
Specification	
Measuring Range m(ft)	0.05 to 100 (0.15 to 328)
Measuring accuracy (mm)	±1.5 mm (±0.06 in)
Resolution (mm)	1
Laser Class / Measuring units	Class II (635 nm, <1mW) / m, in, ft
Auto Power Off / Laser Off	After 3 min / After 30 sec
Data Storage	20 groups
Keyboard Type	Super Soft-Touch (Long life)
Operating/Storage Temperature	0 to 40°C (32 to 104°F) / -10 to 60°C (14 to 140°F)
IP Protection	IP54
Power Supply / Battery Life	2x1.5V AAA battery / Up to 8,000 measurement
Dimension (H x W x D) (mm)	115 x 46 x 28
Weight (kg)	0.210



REFRIGERANT LEAK DETECTOR



High Quality Sensor

16" inch gooseneck detector



EMC
EN : 61326



Features:

- 16" inch gooseneck detector is easy to measure the hard to-reached areas
- Highly sensitive and reliable
- Easy to use: One-hand operation with thumb controlled tick adjust knob. Tick accelerates when sensor tip approaches leak.

Article No.	KW0600566
Model No.	QREM19
Description	Refrigerant Leak Detector
Specification	
Pump Driven Field Calibrateable Range	10ppm
Sensor	Solid state
Alarm	Visible & Audible at 10% LEL for Refrigerant Leaks
Warm-Up	Approx 1 minute
Response Time	Less than 2 sec. (up to 40% LEL)
Duty Cycle	Intermittent
Probe Length	16"
Battery	3"C" Alkaline
Dimension (H x W x D) (mm)	221 x 72 x 46
Weight (kg)	0.49

PH METER & TEMPERATURE



EMC
EN: 61326

Accessories:
Buffer Solution pH 4.01, 7.00, 10.01

Features:

- Measure pH and Temperature using one electrode
- LCD indicate both pH and temperature
- Index Protection: IP65

Article No.	10206579
Model No.	QREM50
Description	Ph Meter & Temperature -5~90C
Specification	
pH Range	0 to 14
pH Accuracy	± 0.03
pH Resolution	0.01
Temperature Range	-5 to 50 °C / 23 to 122 °F
Temperature Accuracy	± 0.8°C / 1.5 °F
Temperature Resolution	0.1
LCD Size	20 x 27 mm
Out of Range Display	For pH, "-- --" will be displayed. For temperature, "L" or "H" will be displayed.
Power Supply	4 x LR44 batteries
pH Calibration	3 points calibration (7.00, 4.01, 10.01)
Dimension (Unit / Pack) (H x W x D) (mm)	38 x 38 x 190 / 275 x 125 x 30
Weight (kg)	0.082



SCALE SERIES



POCKET SCALE

250gr x 0.1gr



Features:

- Protective hard shell and locking case design
- Stainless steel weighing platform
- Easy to read LCD display with white backlight

Article No.	KW0600375
Model No.	QRS25
Description	Pocket Scale 250g / 0.1g
Specification	
Capacity (g)	250
Division (g)	0.1
Tare Range	0 ~ Full Capacity
Operation Temperature (°C)	0 ~ 40° C
Dimension (LxWxH) (mm)	11 x 72 x 15
Weight (kg)	0.17

KITCHEN SCALE



Features:

- Easy operation
- With pan
- Colorful design

Article No.	KW0600622
Model No.	QRS24
Description	Mechanical Kitchen Scale 2Kg (Green)
Specification	
Capacity (kg)	2
Division (g)	10
Dimension (LxWxH) (mm)	178 x 218 x 174
Weight (kg)	0.5

ELECTRONIC KITCHEN SCALE



10110673



10110674

Features 10110673:

- Stainless steel plate
- 1.3 cm super slim
- Hang to stow

Features 10110674:

- With plastic bowl pan
- Easy Operation w/ large button
- LCD display easy to read

Article No.	10110673	10110674
Model No.	QRS22	QRS23
Description	Electronic Kitchen Scale 5kg Slim Plate	Electronic Kitchen Scale 5kg Bowl Pan
Specification		
Capacity (kg)	5	5
Division (g)	20	1
LCD Size (mm)	45 x 21	1.5
Power (V)	1 x CR2032 battery	1 x CR2032 battery
Dimension (LxWxH) (mm)	218 x 169 x 13	27 x 241 x 102
Weight (kg)	0.4	0.5

DIAL SPRING SCALE

TERA



10040455 and 10130865

10130866 and 10130867

Features:

- With stainless steel bowl pan (10040455, 10130865)
- With stainless steel flat pan (10130866, 10130867)
- Steel housing

Article No.	10040455	10130865	10130866	10130867
Model No.	QRS4T	QRS10T	QRS11T	10040455
Description	Dial Spring Scale 5kg / 11 Lb (Blue) With Tera	Dial Spring Scale 10kg With Bowl Pan With Tera	Dial Spring Scale 10kg With Flat Pan With Tera	Dial Spring Scale 20kg With Flat Pan With Tera
Specification				
Capacity (kg)	5	10	10	20
Division (g)		20		100
Dimension (LxWxH) (mm)	21 x 21 x 228	275 x 252 x 29		
Weight (kg)	0.65	2		

HANGING SCALE

TERA



Features:

- Easy operation
- Equipped with hook

Article No.	10040457
Model No.	QRS5T
Description	Hanging Scale 10kg With Hook With Tera
Specification	
Capacity (kg)	10
Division (g)	50
Dimensions (LxWxH) (mm)	130 x 70 x 35
Weight (kg)	1.50

TERA



Features:

- Rapid price amount computing
- Dual display: weight, price, amount
- Tare / Zero / Add-up / Total display / Clear total

Article No.	10210728
Model No.	QRS20T
Description	Hanging Scale Function 30kg With Tera
Specification	
Capacity (kg)	30
Division (g)	10
Min.Weight (g)	200
Bowl Dimensions (cm)	φ 31.1
Battery	Built-in 4V / 4Ah rechargeable
Power	AC / DC charger
Dimensions (LxWxH) (mm)	130 x 70 x 35
Weight (kg)	1.50

PRECISION SCALE

TERA

600 and 1100g x 0.1g



Features:

- Easy operation with two buttons
- Large stainless steel platform makes it perfect for weighing
- Parts counting and percentage weighing are available

Article No.	10040450	10040451
Model No.	QRSIT	QRS2T
Description	Precision Scale 600g / 0.1g With Tera	Precision Scale 1100g / 0.1g With Tera
Specification		
Capacity (g)	600	1100
Division (g)	0.1	
Pan Size (mm)	φ 120	166 x 128
Dimensions (LxWxH) (mm)	145 x 10 x 52	
Weight (kg)	1.1	

WATER PROOF WEIGHTING SCALE

TERA



Features:

- With stainless steel pan
- IP67 waterproof plastic housing
- Protective coating of silicon-gel on electronics

Article No.	10130864
Model No.	QRS9T
Description	Water Proof Weighting Scale 15kg With Tera
Specification	
Capacity (Kg)	15
Min. Capacity (g)	100
Division (g)	5
Pan size (cm)	25 x 21.8
Power Supply	4V / 4Ah rechargeable battery
Dimensions (LxWxH) (mm)	275 x 252 x 29
Weight (kg)	2

Accessories:
Adaptor 1pc

COUNTING SCALE

TERA



Features:

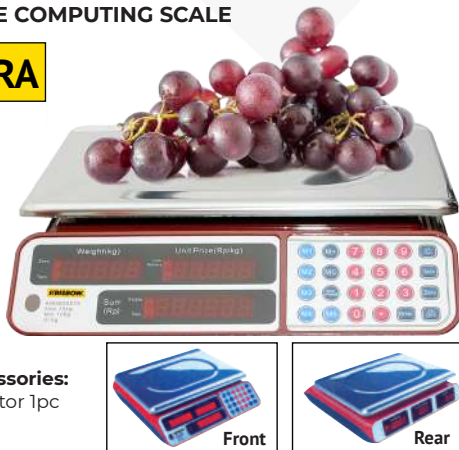
- High-precision strain gauge technology
- Green backlight LCD display
- Tare/zero/add-up/total display/clear total

Article No.	10130868
Model No.	QRS13T
Description	Counting Scale For Industry 15kg With Tera
Specification	
Capacity (Kg)	15
Min. Capacity (g)	100
Division (g)	5
Pan size (cm)	30 x 23
Power Supply	4V / 4Ah rechargeable battery
Dimensions (LxWxH) (mm)	30 x 30 x 13
Weight (kg)	3

Accessories:
Adaptor 1pc

PRICE COMPUTING SCALE

TERA



Features:

- High precision strain gauge technology
- Red LED display
- Rapid price amount computing

Article No.	KW0600724
Model No.	QRS2IT
Description	Dig Price Scale 15kg With Tera Kw06-579
Specification	
Capacity (kg)	15
Min. Capacity (g)	100
Division (g)	5
Platform Dimension (LxW) (mm)	355 x 235
Scale Unit (LxWxH) (cm)	35 x 33 x 11.5
Pack. Carton (LxWxH) (cm)	41 x 39 x 60
Power Supply	AC 220V / 50Hz (Charger Include) (4V / 4Ah Rechargeable Battery Inside)
Weight (kg)	7

Accessories:
Adaptor 1pc

PLATFORM SCALE



ELECTRONIC BABY SCALE

TERA



Accessories:
Adaptor 1pc

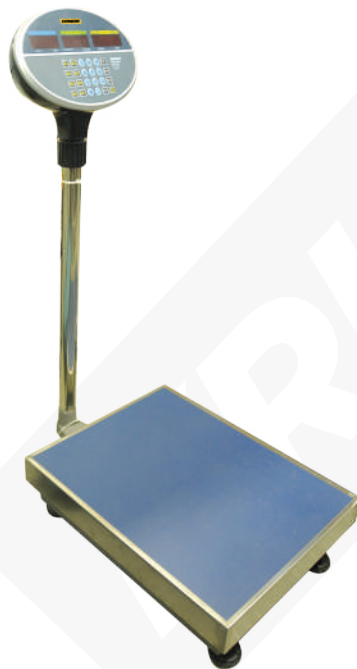
Features :

- Growth rate by height and weight
- White backlight LCD display
- 8 memory

Article No.	10133899
Model No.	QRS18T
Description	Electronic Baby Scale 25kg With Tera
Specification	
Weight Capacity (Kg)	25
Weight Graduation (g)	5
Height Measuring Range (cm)	46 to 80
Height Graduation (mm)	1
LCD Size (mm)	75 x 30
Memory Record	8
Power Supply	4 x 1.5V AAA
Dimension (LxWxH) (mm)	604 x 36 x 89
Weight (kg)	7.8

PRICE COMPUTING PLATFORM SCALE

TERA



Accessories:
Adaptor 1pc

Features:

- High precision strain gauge technology
- High light LED display
- Rapid price amount computing

Article No.	10040459
Model No.	QRS22T
Description	Price Computing Platform Scale 150kg With Tera
Specification	
Capacity (kg)	150
Min. Capacity (kg)	1
Division (g)	50
Dimensions Platform (L x W) (cm)	50 x 40
Dimensions Scale Unit (L x W x H) (mm)	680 x 400 x 90
Weight (kg)	12.10



DIGITAL PLATFORM SCALE

TERA



10130870

TERA



10130863

TERA



10210579

Features :

- Foldable pole, convenient to mobile use.
- Stainless steel indicator frame and platform.
- High precision strain gauge technology

Article No.	10130870	10130863	10210579
Model No.	QRS15T	QRS8T	QRS19T
Description	Digital Platform Scale 60Kg With Tera	Digital Platform Scale 150kg with Tera	Electronic Platform Scale 300kg with Tera
Specification			
Capacity (Kg)	60	150	300
Min. Capacity (g)	400	1	-
Division (g)	20	50	100
Class		III	-
Platform size (cm)	42 x 32	49 x 39	60 x 45
Power Supply	4V / 4Ah rechargeable battery		
Dimension (L x W x H) (mm)	670 x 365 x 1100	490 x 390 x 1000	-
Weight (kg)	9.8	10.6	-
Packing Dimension (L x W x H) (mm)	74 x 34 x 17.5	83 x 40.5 x 17	-



MATERIAL TESTING

CONCRETE TEST HAMMER



10447815

Optional Accessories:



KW0600455

Features :

- Our reliable mechanical Concrete Test Hammer is used for non-destructively measuring the resistance of a reinforced concrete structure.
- The greater the resistance of the concrete, the greater the rebound impact.

Article No.	10447815
Model No.	QPCCT3
Description	Concrete Test Hammer
Specification	
Rebound Value Range (Mpa)	10 ~ 100
Rated Rebound Average on Anvil	80±2
Impact Kinetic Energy (Nm)	2.207
Spring Rigidity (N/m)	785 ± 30
Impact Stroke (mm)	75
Hardness of the impact Surface between Impact Hammer and Impact Rod	HRC59-63
Max. Static Friction of the Pointer System (N)	0.5 ~ 0.8
Dimension Unit (mm)	Ø 60 x 280
Dimension (LxWxH) (mm)	350 x 90 x 90
Weight (kg)	1

Article No.	Description
KW0600455	Anvil Block for 10447815, KW0600454

ULTRASONIC THICKNESS GAUGE



Features :

- High stability and precision
- Suitable for all solid metallic and non-metallic materials
- High quality metal shell

Article No.	10238110
Model No.	QPUT1
Description	Ultrasonic Thickness Gauge 0.7-300mm
Specification	
Measuring Range (mm)	0.7 to 300
Resolution (mm)	0.01 mm
Accuracy (mm)	± (0.5%H + 0.01) mm, H = the thickness of testing piece
Velocity Range (m/s)	1000 to 9999 m/s

PUSH PULL SCALE



Features :

- Easy operation, hand-holding design and being installed with various test stands and clamps
- Needle indication, easy reading and high accuracy
- Peak holding and tracking

Article No.	KW0600193	KW0600194	KW0600195	KW0600196	KW0600198
Model No.	QRFM2	QRFM4	QRFM5	QRFM1	QRFM3
Description	Push Pull Scale 20N / 0.1N	Push Pull Scale 30N / 0.2N	Push Pull Scale 50N / 0.2N	Push Pull Scale 100N / 0.5N	Push Pull Scale 300N / 2N
Specification					
Capacity (N)	20	30	50	100	300
Resolution (N)	0.1	0.2		0.5	2
Accuracy	± 1%FS				

MANUAL TEST STAND FOR PUSH PULL



Features :

- KW0600685 wheel manual stand is the specially designed to match (sensor Inside) push pull gauges and can be combined in to various test stands.
- Applied in various test, such as switch test,insertion/withdraw test and fracture test, this test stand has motive carrier on the base, so it is convenient to fix clamps.

Article No.	KW0600685
Model No.	QRMT4
Description	Manual Test Stand For Push Pull
Specification	
Capacity (N)	500
Dimension ((LxWxH)mm)	250 x 360 x 470
Stroke (mm)	170
Weight (kg)	16.80

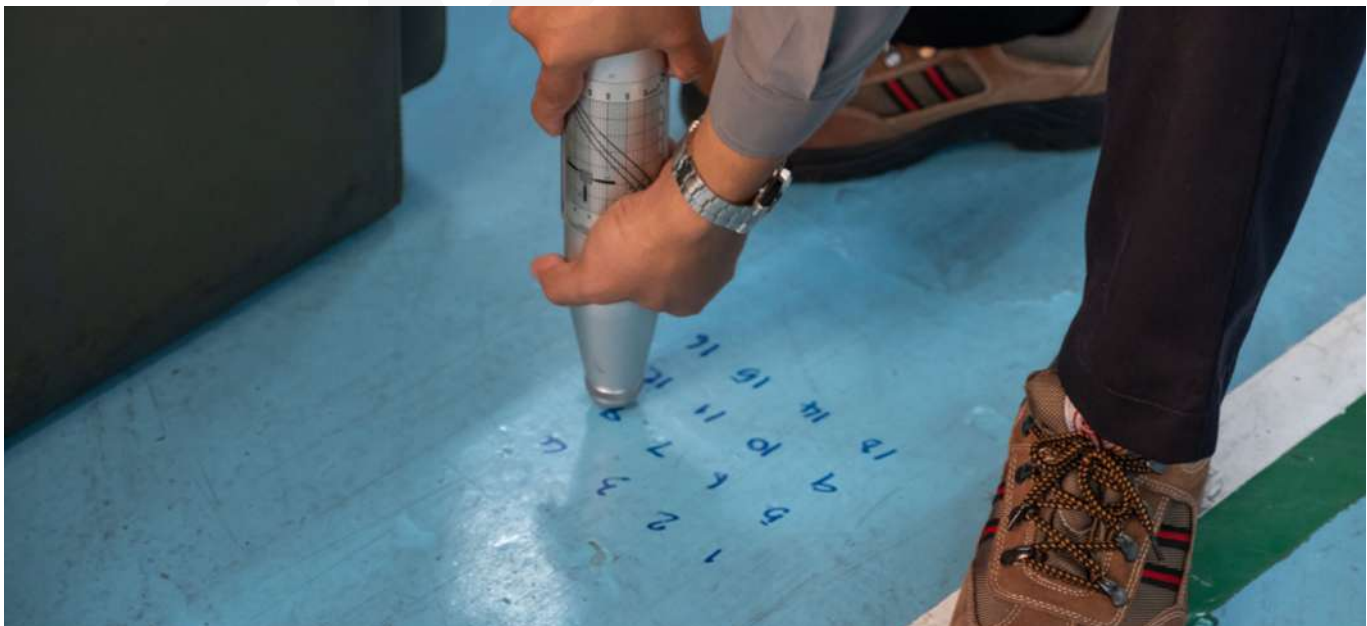
DIGITAL TORQUE METER



Features :

- Peak detect function
- Simple operation
- Easy to read display with backlight

Article No.	KW0600686
Model No.	QRCT4
Description	Digital Torque Meter
Specification	
Capacity (N.m)	10
Resolution (N.m)	0.005
Accuracy	± 0.5%FS
Power	8.4V 1.2V x 7 Nickel Hydride Battery



GENERAL MEASURING



POCKET MULTIMETER DIGITAL



10 Functions



UL 61010-1 v3

Accessories :
· Test Leads

Features:

- 4000 counts digital display with backlight
- Autoranging measurement
- Non Contact Voltage (NCV) AC

Article No.	10206559	
Model No.	QRE40	
Description	Multimeter Digital Pocket 600V	
Specification		
DC Voltage (V)	4 / 40 / 400 / 600	± (1.2% + 3d)
AC Voltage (V)	4 / 40 / 400 / 600	± (2.3% + 10d)
DC Current (A)	400µ / 4000µ / 40 m / 200 m	± (2% + 8d)
AC Current (A)	400µ / 4000µ / 40 m / 200 m	± (2.8% + 10d)
Resistance (Ω)	400 / 4k / 400k / 4 m / 40 m	± (1.2% + 5d)
Capacitance (F)	51.2µ / 512µ / 5.12 m / 51.2 m / 100	± (5% + 25d)
Frequency (Hz)	9.999 / 99.99 / 999.9 / 9.999k	± (2% + 5d)
Duty Cycle (%)	0.5 to 99	
Continuity	Buzzer sound <100 ohm	
Diode Test	Test current 1mA, Open circuit voltage 1.5V	
Power Supply	2 x AAA 1.5V batteries	
Dimension (H x W x D) (mm)	116 x 59 x 36	
Weight (kg)	0.145	

MULTIMETER DIGITAL COMPACT



10 Functions



EMC & LVD
EN : 61010-1
EN : 61010-2-031
EN : 61326



Accessories :
· Test Leads & Carrying Case

Features:

- IP65 waterproof & 2M droop-proof
- 4.0 Bluetooth interface with KRISBOW meter
- Digital display counts 4000

Article No.	10106732	
Model No.	QPE27	
Description	Multimeter Digital Compact Pro	
Specifications		
DC Voltage (V)	400 m / 4 / 40 / 400 / 600	±(1.0%+3d)
AC Voltage (V)	400 m / 4 / 40 / 400 / 600	±(1.0%+5d)
DC Current (A)	400µ / 4 m / 40 m / 400 m / 10	±(1.5%+3d)
AC Current (A)	400µ / 4 m / 40 m / 400 m / 10	±(2.5%+5d)
Resistance (Ω)	400 / 4K / 40K / 400K / 4 m	±(1.5%+5d)
Capacitance (F)	40n / 400n / 4µ / 40µ / 400µ / 4 m	±(3.0%+5d)
Frequency (Hz)	9.999 / 99.99 / 999.9 / 9.999K / 99.99K / 500K	±(1.0%+5d)
Duty Cycle (%)	9.99%	
Diode Check	6V, open circuit 3.3V	
Continuity Test	Buzzer sound < 50Ω	
Analysis software	KRISBOW meter	
Power Supply	2x1.5V AAA battery	
Dimension (H x W x D) (mm)	120 x 67 x 50	
Weight (kg)	0.200	

MULTIMETER DIGITAL HEAVY DUTY



12 Functions



EMC & LVD
EN : 61010-1
EN : 61010-2-031
EN : 61326



Features:

- IP67 Waterproof
- 4.0 Bluetooth interface with KRISBOW meter
- Display Count 6000

Article No.	10106731	
Model No.	QPE26	
Description	Multimeter Digital Heavy Duty	
Specifications		
DC Voltage (V)	600m / 6 / 60 / 600 / 1000	±(0.8%+5d)
AC Voltage (V)	6 / 60 / 600 / 1000	±(1.0%+5d)
AC + DC Voltage [LoZ] (V)	6 / 60 / 600 / 1000	±(3.0%+30d)
DC Current (A)	600µ / 6000µ / 60 m / 600 m / 10	±(1.0%+3d)
AC Current (A)	600µ / 6000µ / 60 m / 600 m / 10	±(1.0%+3d)
Resistance (Ω)	600 / 6K / 60K / 600K / 6 m / 60 m	±(1.5%+5d)
Capacitance (F)	60n / 600n / 6µ / 60µ / 600µ / 6000µ	±(3.0%+5d)
Frequency (Hz)	10 to 10K	±(1.0%+5d)
Duty Cycle (%)	20 to 80	±(1.2%+2d)
Temperature	-20 to 760°C -4 to 1400°F	±(1.0%+5°C) ±(1.0%+9°F)
Diode Check	Test current 1mA, open circuit voltage 3V	
Continuity Test	Buzzer sound < 30Ω	
Input Impedance for DCV	Around 10MΩ	
Low input Impedance	For DCV/ACV measurements >3kΩ @ 600V MAX.	
AC Bandwidth (Hz)	50 to 1000	
Analysis software	KRISBOW meter	
Power Supply	4x1.5V AAA battery	
Low Battery Indication	≤4.5V	
Dimension (H x W x D) (mm)	170 x 74 x 450	
Weight (kg)	0.400	

Accessories :

- Test Leads
- Temperature Probe
- Carrying Case

CLAMP METER AC/DC



12 Functions



EMC & LVD
EN : 61010-1
EN : 61010-2-031
EN : 61326

Accessories:

- Test Leads
- Temperature Probe
- Carrying Case

Features:

- 4.0 Bluetooth interface with KRISBOW meter
- True RMS measurement
- Following safety standard requirements

Article No.	10106733	
Model No.	QPE28	
Description	Clamp Meter AC/DC 1000A Pro	
Specification		
AC Current (A)	50 / 1000	±(2.5%+5d)
DC Current (A)	50 / 1000	±(2.5%+5d)
AC Current (µA)	500 / 5000	±(1.5%+30d)
DC Current (µA)	500 / 5000	±(1.0%+3d)
AC Voltage (V)	500m / 5 / 50 / 500 / 600	±(1.0%+30d)
DC Voltage (V)	500m / 5 / 50 / 500 / 600	±(0.1%+3d)
Resistance (Ω)	500 / 5K / 50K / 500K / 5 m / 50 m	±(1.0%+5d)
Capacitance (F)	500n / 5µ / 50µ / 500µ / 5m	±(3.5%+10d)
Frequency (Hz)	50 / 500 / 5K / 50K / 500K / 5M / 10 MHz	±(0.3%+2d)
Temperature	1000°C / 1832°F	±(1.0%+2.5°C/4.5°F)
Diode Check	Test current 0.3 mA	
Continuity Test	Buzzer sound at 35 Ω	
Analysis software	KRISBOW meter - electric meter	
Power Supply	1 x 9V NEDA 1604 battery	
Dimensions (H x W x D) (mm)	230 x 76 x 40	
Weight (kg)	0.350	

THERMOMETER INFRARED



-50 to 1050°C



- 30:1 distance to spot size
- IR thermometer with type K temperature measurement

Wireless USB Interface
20 Point Memory

Accessories:
Wireless USB Interface Cable

Features:

- Wireless USB interface
- High 30:1 distance to target ratio measures smaller surface areas at greater distances
- Automatic capture emissivity for targeting

Article No.	KW0600565
Model No.	QREM18
Description	Thermometer Infrared -50~1050C Datalogger
Specification	
IR Temp. Range	-50 to 1050°C / -58 to 1922°F
IR Temp. Resolution	0.1°C / 1°C
Optical Resolution	30:1 distance to spot size
Type K Temp. Range	-50 to 1370 °C/ -58 to 2498°F
Type K Temp. Resolution	0.1°C / 1°C
Response Time	Less than 1 second
Basic Accuracy	±1.5% of reading
Emissivity	Adjustable 0.10~1.0
Dimension (H x W x D) (mm)	180 x 106 x 48
Weight (g)	650



CE

DUAL LASER

-50 to 1600°C



EMC
EN: 61326
EN: 60825-1

Features:

- User selectable °C or °F
- Dual laser targeting
- Automatic data hold

Article No.	KW0600656
Model No.	QREM20
Description	Thermometer Infrared -50~1600C
Specification	
IR. Temp. Range (°C/°F)	-50 to 1600 / -58 to 2912
Response Time (ms)	Less than 150
Resolution (°C)	1.0 up 1000, 1 over 1000
Basic Accuracy (%)	± 1.0 of reading
Optical Resolution	50:1 Distance to Spot Size
Emissivity	Adjustable 0.10~1.0
Type K Temp. Range (°C/°F)	-50 to 1370 / -58 to 2498
Basic Accuracy (TK)(%)	± 1.5 of Reading
Reading Memory	99
Dimension (H x W x D) (mm)	204 x 155 x 52
Weight (kg)	0.32

INFRARED THERMAL IMAGING



CE



EN: 61326-1
EN: 61010-1



Features:

- 2.8" LCD display
- 5 Megapixels digital camera
- Capture image & video

Article No.	10037771
Model No.	QREM25
Description	Infrared Thermal Imaging Pro -20~350C
Specifications	
IR Resolution	80 x 80 pixels
Minimum fokus distance (m)	0.5
Object temperature range	-20°C to +150°C (-4°F to +302°F) 0°C to +350°C (+32°F to +662°F)
Accuracy	2°C (3.6°F) or 2% of reading
Image modes	IR Image, Visual Image, Picture In Picture
Spotmeter	Center Spot, Auto Hot or Cold Markers
Laser Class	II
Interfaces	USB-mini, audio, HDMI
Video storage format	1280 x 960 @30fps Standart MPEG-4
Image storage format	Standart JPEG
Built in digital lens data	59°
Battery	Li-ion Battery, 4 Hours Operating Time
Dimensions (H x W x D) (mm)	224 x 77 x 96
Weight (kg)	0.5

WOOD MOISTURE METER



EMC
EN : 61326

Features:

- Large LCD display
- Readings with moisture probe or hammer electrode
- Readings with integral electrode pins

Accessories:

- Moisture hammer probe
- Moisture baseboard probe

Article No.	10037770
Model No.	QPEM24
Description	Wood Moisture Meter Pro
Specifications	
Electrode Length	8 mm
Electrodes	Integrated, Replaceable
Measuring Range	Wood : 1 – 75%
	Building Material : 0.1 – 2.4%
	Ambient Temperature: -40 to 70°C (-40 to 158°F)
	Ambient Relative Humidity 0 to 100%
Accuracy	Wood : 0 – 30% / ±1%
	30 – 60% / ±2%, 60 – 75% / ±4%
	Others Materials : / ±0.5%
	Ambient Temperature :
	-40 ~ -10°C & +40 ~ +70°C / ±2°C
	-10 ~ +40°C / ±1°C
Auto Power OFF	
After Approx. 3 mins	
Auto LCD Backlight OFF	
After Approx. 10 sec	
Dimension (HxWxD) (mm)	160 x 60 x 28
Weight (kg)	0.203

SOUND LEVEL METER DATALOGGER



Features:

- Conforms to the IEC61672-1 class 2 for Sound Level Meter
- Comply with EMC
- Datalogger function (32700 readings)

Article No.	10176566
Model No.	QPEM34
Description	Sound Level Meter Datalogger Pro
Specification	
Frequency range	31.5Hz to 8KHz
Measuring level range	30 to 130 dB (auto mode)
Accuracy	± 1.4 dB
Mode Level ranges	Lo: 35-80 dB; Med: 50-100 dB; Hi: 80-130dB
Resolution	0.1dB
Frequency weighting	A and C
Microphone	1/2" electric condenser
Display	LCD (4 digits)
Display Update	2 times / second
Power supply	9V battery
Dimensions (H x W x D) (mm)	248 x 65 x 45
Weight (Net/Gross) (g)	248 / 350 g

LASER DISTANCE METER



EMC
EN : 60825-1
EN : 61326



Features:

- IP54 Dust Protect/Splash proof
- 4.0 Bluetooth interface with KRISBOW meter
- Area, Volume Calculations

Article No.	10106734	10133315
Model No.	QPDM100	QPDM150
Description	Laser Distance Meter 100m Pro	Laser Distance Meter 150m Pro
Specification		
Measuring Range (m)	0.05 to 100	0.05 to 150
Measuring accuracy (mm)	±1.5 mm (±0.06 in)	
Resolution (mm)	1	
Laser Class/Measuring Units	Class II (635 nm, <1mW) / m, in, ft	
Auto Power Off/Laser Off	After 3 min / After 30 sec	
Data Storage	20 groups	
Range of Bluetooth (m)	10	
Keyboard Type	Super Soft-Touch (Long life)	
Operating/Storage Temperature	0 to 40°C(32 to 104°F) / -10 to 60°C (14 to 140°F)	
IP Protection/Analysis software	IP54 / Krisbow meter	
Power Supply/Battery Life	2x1.5V AAA battery / Up to 8,000 measurement	
Dimension (H x W x D) (mm)	135 x 53 x 30	
Weight (kg)	0.210 / 0.450	

MATERIAL TESTING



ROCKWELL HARDNESS TESTER



Features :

- Economical solution, wide range measurement and simple operation
- Wide usage range: hardened steel, tempered steel, steel, steel rolling, annealing cold malleable iron, aluminum alloy, copper, etc

Article No.	10200581	
Model No.	QPH8	
Description	Rockwell Hardness Tester, 20-70HRC	
Specification		
Measuring Range	(HRA)	20 - 88
	(HRB)	20 - 100
	(HRC)	20 - 70
	(HRD)	40 - 77
Total Load	(N)	588.4, 980.7, 1471
	(kgf)	60, 100, 150
Dimension (L x W x H)(mm)		463 x 241 x 660
Weight (kg)		80

DIGITAL MICRO VICKERS HARDNESS TESTER



Features :

- High-tech product integrated mechanical and photoelectrical technologies.
- Equipped with a digital microscope, direct display of measuring method, test force, indentation length, hardness value, dwell time of test force.
- Especially suitable for testing the hardness of micro and thin specimen, fragile material.

Article No.	KW0600599	
Model No.	QPH2	
Description	Digital Micro Vickers Hardness Tester	
Specification		
Testing Field (HRA)		1 ~ 2967 HV
Test Force N (kgf)	(N)	4.903, 9.807, 19.61, 24.52, 29.42, 49.03, 98.07, 196.1, 294.2
	(kgf)	0.5, 1, 2, 2.5, 3, 5, 10, 20, 30
Microscope Magnifying		100x and 200x
Dimensions (mm)		530 x 225 x 630
Weight (kg)		50

UNIVERSAL HARDNESS TESTER



Features :

- Suitable for testing the hardness of ferrous, non-ferrous metals, hard metals, carburized layers and chemical treating layers
- Multiple testing methods; Brinell & Rockwell & Vickers
- Different kinds of testing force and indenter can be selected

Article No.	KW0600601
Model No.	QPH11
Description	Universal Hardness Tester (HR, HB, HV)
Specification	
Rockwell Test Force (N)	588, 980, 1471
Brinell Test Force (N)	306, 613, 1839
Vickers Test Force (N)	294, 588, 980
Dimension (L x W x H)(mm)	560 x 260 x 760
Weight (kg)	90

HARDNESS TESTER WITH IMPACT D & PRINTER



Features :

- High stability and precision
- Direct conversion of HL, HRB, HRC, HRV, HB, HV, HS, HSD
- Conversion to tensile strength (U.T.S)

Article No.	10238107			
Model No.	QPH4			
Description	Hardness Tester with Impact D & Printer			
Specification				
Measuring Range	HLD	170 – 190	HB	19 – 683
	HRA	59.1 – 88	HV	80 – 1042
	HRB	13.5 – 101.7	HS	30.6 – 102.6
	HRC	17.9 – 69.5		
Accuracy	± 6 HLD / ± 1.5 HRC			
Hardness Parameter	HL, HRB, HRC, HRV, HB, HV, HS, HSD			

RUBBER HARDNESS TESTER SHORE



Features :

- Pocket size model with integrated probe
- Standards: DIN 53505, ASTM D 2240, ISO 7619 JIS K7215
- RS232 data output

Article No.	KW0600621	KW0600612
Model No.	QPH9	QPH10
Description	Rubber Hardness Tester Shore A	Rubber Hardness Tester Shore D
Specification		
Test Scale Available	Shore A	Shore D
Standards	DIN53505, ASTM D2240, ISO 7619, JIS K7215	
Measuring Range	0~100 HA	0-100HD
Tolerance	+1HA	<+1HD (Between 20~90HD)
Display Resolution	0,1 HA	0,2 HD

PORTABLE RUBBER HARDNESS TESTER

RUBBER HARDNESS/DUROMETER MICROPOROUS



KW0600689



KW0600690

Features :

- Digital durometer for shore hardness testing
- Pocket size model with integrated probe
- Meets DIN 53505, ASTM D 2240, ISO 7619

Article No.	KW0600689	KW0600690
Model No.	QPH5	QPH6
Description	Rubber Hardness / Durometer Shore A 10-90 HA	Rubber Hardness / Durometer Shore D 20-90 HD
Specification		
Measuring Range	0 - 100 HA	0 - 100 HD
Dimension (mm)	115 x 60 x 25	
Available Test Range	10 - 90 HA	20 - 90 HD



Features :

- Designed for testing the hardness of foam, sponge, shoe microporous material, etc

Article No.	KW0600691
Model No.	QPH3
Description	Rubber Hardness/Durometer Micropore 10-90 HW
Specification	
Measuring Range (HW)	0 - 100
Available Test Range (HW)	20 - 90

DIGITAL CONCRETE TEST HAMMER



Features :

- One piece design integrating tester body and high precision Non-contact sensor (metallic grating reflective sensor)
- Dual displaying (digital display by sensor and scale display by needle)
- Voice prompting offering guaranteed data output

Article No.	10069676
Model No.	QPH1
Description	Digital Concrete Test Hammer
Specification	
Measuring Range (Rebound Valve) (Mpa)	10 - 60
Data Storage	200 Standard Testing x 99 Test Zones 20 Special Testing (strength measuring curves)

COATING THICKNESS GAUGE



Features :

- High stability and precision
- Two measuring methods: magnetic induction (Fe) and eddy current (Nfe)

Article No.	10238109
Model No.	QPCT2
Description	Coating Thickness Gauge 0-1250µm ADV
Specification	
Measuring Range	0 to 1250 µm or 0 to 50 mils
Resolution	0.1 µm
Accuracy	± (3%H + 1.5) µm, H = the thickness of testing piece
Min. Thickness of Substrate	0.5 mm

SPECTROPHOTOMETER AND PORTABLE COLORIMETER



10109300



10109301

Features :

- Display complete reflectance rate and input LAB value manually
- 45/0 method (45 ring-shaped illumination, vertical viewing)

Article No.	10109300
Model No.	QPVI3
Description	Spectrophotometer
Specification	
Illumination / Observation System	45° / 0°structure
Wavelength Range (mm)	400 - 700

Features :

- Built-in white plate parameter.
- Double Location: Illuminating locating and precise cross locating

Article No.	10109301
Model No.	QPVI2
Description	Portable Colorimeter
Specification	
Illuminating / Viewing Geometry	8°/d
Measuring (mm)	4
Detector	Silicon photoelectric diode
Location	Illuminating Locating / Cross Locating

TOUCH SCREEN GLOSS METER



Features :

- 3.5 inch high resolution 480 x 320 large touch screen
- Comply to ISO 2813, ASTM D523, GB/T 9754, ASTM D2457
- Beauty appearance, good man-machine communication interface

Article No.	10109302
Model No.	QPVI4
Description	Touch Screen Gloss Meter
Specification	
Measuring Angle	20°, 60°, 85°
Standard	ISO 2813, GB/T 9754, ASTM D 523, ASTM 2457 Display 5 sets of test data.
Measuring Area (mm)	20o:0 - 2000GU 60o:0 - 1000GU 85o:0 - 160GU
Measuring Range	20o:0 - 2000GU 60o:0 - 1000GU 85o:0 - 160GU

VIBRATION TESTER ADVANCE TYPE



Features :

- Three display modes:
- Common mode-display any one of acceleration, velocity or displacement
- Special mode-display acceleration, velocity and displacement simultaneity
- Spectrum mode-display Spectrum charts

Article No.	KW0600254
Model No.	QPVA1
Description	Vibration Tester Advance Type
Specification	
Transducer	100 - 570
Measuring Range	10 - 100
Frequency Range (Hz)	Acceleration: 10 - 200, 10 - 500, 10 - 1, 10 - 10 K Velocity: 10 - 1 K Displacement: 10 - 500
Accuracy	± 5%

ULTRASONIC FLAW DETECTOR



Features :

- Two measuring unit: mm/inch
- Two scanning mode: A and B
- All built in software can be up-graded on PC

Article No.	KW0600470
Model No.	QPF4
Description	Ultrasonic Flaw Detector 2.5-9999mm
Specification	
Scanning Range (mm)	2.5 - 9999
Scanning Resolution (mm)	0.1 (2.5 - 100) 1 (100 - 5,000)
Gain Range (dB)	0 - 110

Article No.	KW0600558
Model No.	QPF6
Description	V1 Calibration Block

ULTRASONIC FLAW DETECTOR



Features :

- Large, 640x480 VGA color TET display with 60Hz update.
- Precise and stable 0.1% and vertical linearity 2%.
- DAC, AVG, DGS curves and defect echo help to evaluated defect equivalent calculation.

Article No.	10495759
Model No.	QPF5
Description	Ultrasonic Flaw Detector TUD500
Specification	
Scanning Range (mm)	2.5 - 9999
Scanning Resolution (mm)	0.1 (2.5 - 100) 1 (100 - 5,000)
Gain Range (dB)	0 - 110

Article No.	KW0600558
Model No.	QPF6
Description	V1 Calibration Block

MAGNETIC FLAW DETECTOR



Features :

- Completely portable single handed operation
- Reliable location of defects in ferrous metals
- The deeper penetrating depth by the magnetic field

Article No.	KW0600804	
Model No.	QPF2	
Description	Magnetic Flaw Detector	
Specification		
Power Supply Mode	AC + Low Frequency	DC + Low Frequency
Max power (W)	400	50
Output Voltage (V)	AC: 220V Low frequency: 70 - 140V	DC: 12V Low frequency: 7 - 36V
Working Current (A)	2.4A (pulsating current > 10A)	2A (pulsating current > 6A)
Probe Shape	Horseshoe	

VIDEO AND CAMERA BORESCOPE



Features :

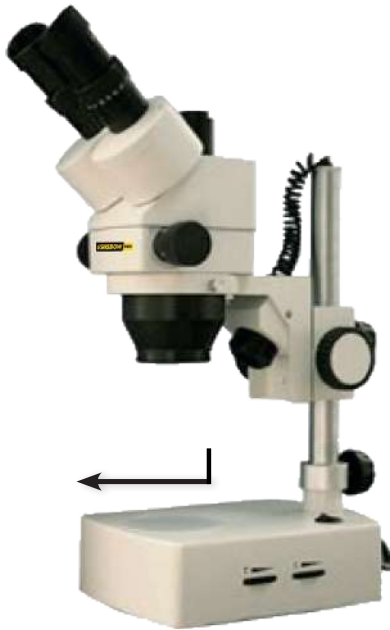
- IP67 flexible goose neck
- Support rotate images (under the camera mode, press last/next song to rotate the angle)
- Support audio and video recording

Article No.	KW0600651
Model No.	QRMT9
Description	Video and Camera Borescope 1M, 320x240 Pixel
Specification	
LCD Screen Type (Inch)	3.2 TFT
Pixels	320 x 240
The Max. Number of Frames (FPS)	30 / Second
Camera Diameter (mm / Inch)	17 / 0.66



STEREO MICROSCOPE

MAGNIFICATION
7X ~ 45X



Features :

- Stereo trinocular microscope - turret style selectable magnification
- Wide-field, distortion-free
- Zoom objective magnification 0.7X-4.5X

Article No.	KW0600661
Model No.	QPVI45
Description	Stereo Microscope 7x ~ 45x
Specification	
Eyepiece	WF10x (Ø 20mm)
Objective Lens	Objectives range of zoom magnification 0.7x - 4.5x
Total Magnification	7x - 45x

TRINOCULAR METALLURGICAL MICROSCOPE



KW0600592

Features :

- Coaxial coarse/fine focus system, with tensional adjustable and up stop, minimum division of fine focusing: 2µm
- Utilize reflected & transmitted light mix illumination; you can descry the special effect in some object
- Trinocular, can switch to observe normally or to observe the Polarize, can send 100% of light to the binocular eyepieces or to the top port

MAGNIFICATION
50X ~ 1000X



Article No.	KW0600587	KW0600592
Model No.	QPVI10D	QPVI10M
Description	Metallurgical Microscope 50 ~1000x with Digital Camera (Set)	Trinocular Metallurgical Microscope 50~1000x
Specification		
Eyepiece	Wide Field 10x (Ø 18mm)	
Objective	Plan Achromatic 5x, 10x, 40x, 60x, 100x	
Eyepiece Tube	Trinocular, Inclination Of 30°, 100% Image Light for Photography Capable	
	Analyzer with Field Diaphragm to Switch	